

Hardware

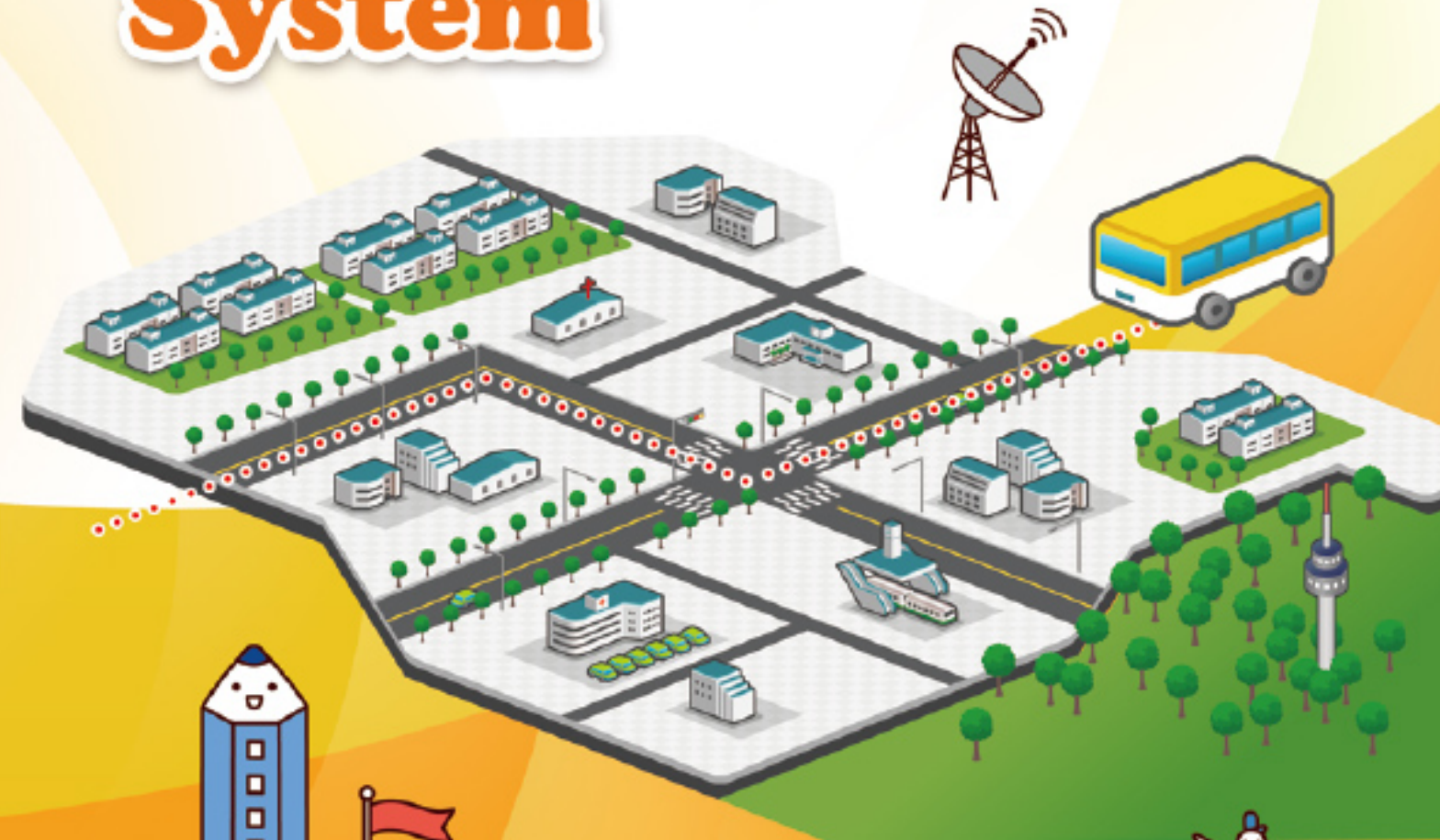


Product Specification	G7 LBS Exciter	F3 Mainstream GPS Tracker
Dimensions(mm)	151 x 93 x 29.6	151 x 93 x 29.6
Wireless Connectivity	2G	
	3G	
	4G	
	WiFi	
	433MHz	
	Zigbee	
	125KHz	V
Air Interface	GSM/GPRS	V
GPS Functionality	Voice	V
	SMS	V
GPS Functionality	No	V
Physical Interface	RS232	UART CAN-Option 2Wire-Option
I/O	DI	2
	DO	No
	AI	No
	AO	No
Power Sources	12V/2A DC	V
	12V/24V Vehicle Power	Option
Operating Temperature	-20°C - 70°C	-20°C - 70°C
Storage Temperature	-40°C - 85°C	-40°C - 85°C
Humidity	5% - 95% non-condensing	5% - 95% non-condensing

To record the location of students and real time monitoring accurately to ensure their safety in an easy way!



Students Tracking And Management System



To record the location of students and real time monitoring accurately to ensure their safety in an easy way!



Students Tracking And Management System

Convenience • Rapidness • Real-time

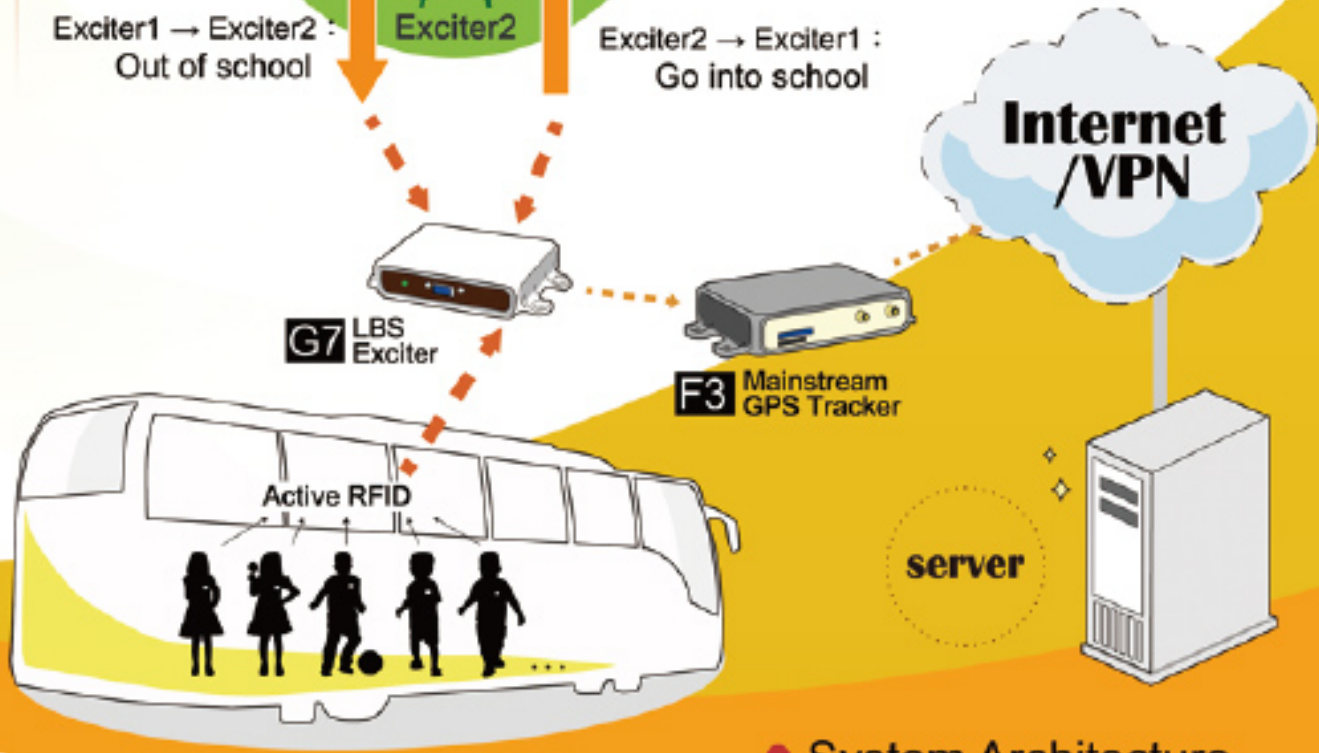
About

The system will track students' location when entering/exiting school bus/ school gate. With precise data log, it's more convenient to monitor and to ensure the students' safety.



System Architecture

G7 can detect students going on school bus, and send message to the server periodically. The record will be upload to the platform server through the Internet and compute to a database.



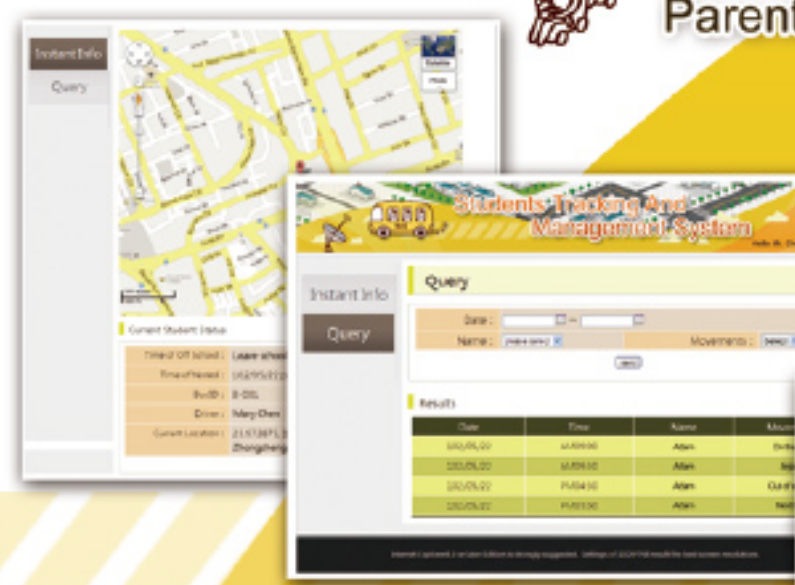
System Architecture

System Software



Parents • Real Time Tracking

Through this system, parents are able to track the condition of their children: when they get on board, where the bus is, and when their children enter the campus. Parents may check children's status online by particular time frame.



Administrator

Real Time Tracking

Administrator are able to track the path of a specific school bus, and further record its current location with time and which student on board.



Tracking

Administrator are able to pull out the record by narrowing down the time frame, location, drivers profile, or students on board. The search criteria can be individual student in order to know when students enter or leave the campus or when they get on/off the school bus.



Statistics Report

The data can be computed into different formats for different usages.

